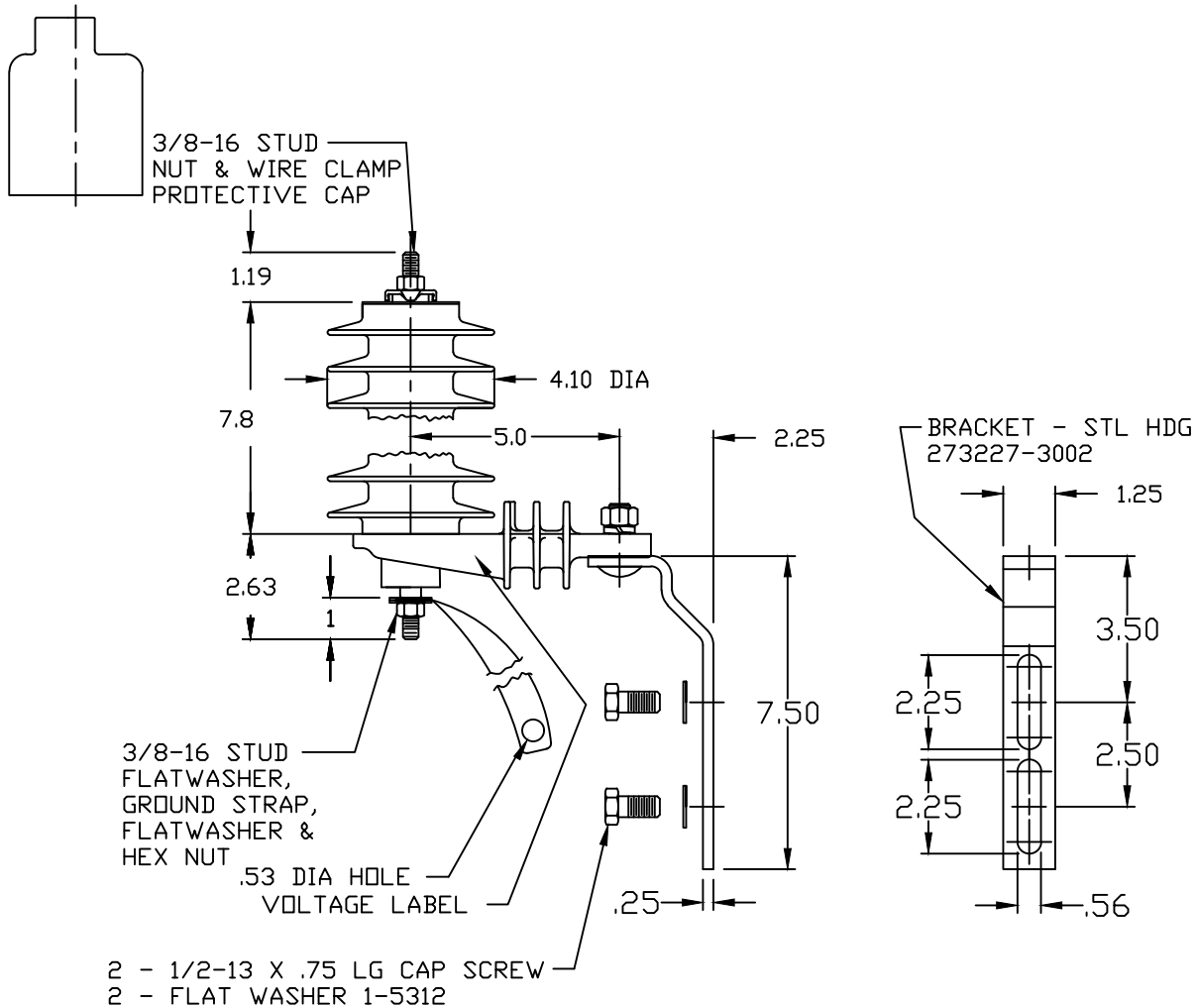


NOTES:

1. DIMENSIONS SUBJECT TO +/- 3% TOLERANCE
2. LEAKAGE DISTANCE (Inches) - 25.2
3. ALTITUDE 0-12000 FT. ABOVE SEA LEVEL
4. WEIGHT OF UNIT INCLUDING HARDWARE - 5.7 LB.
5. MAXIMUM CONTINUOUS LINE-TO-GROUND OPERATING VOLTAGE 15.3 kV MCOV
6. VOLTAGE RATING 18 kV RMS.
7. 1/2-13 HEX NUT & LOCKWASHER PROVIDED WITH SHIPMENT.



MAXIMUM DISCHARGE VOLTAGE (kV)						
FDW	SWITCHING SURGE	8/20 LIGHTNING IMPULSE				
		1.5 kA	3.0 kA	5 kA	10 kA	20 kA
10 kA	500 A	45.6	48.8	51.7	56.4	64.1
63.1	41.7					

DISTRIBUTION
ARRESTER
IEEE HEAVY DUTY
IEC DH CLASS

REV DATE 06/16/20

CONFIDENTIAL: THIS DRAWING AND ITS CONTENTS ARE CONFIDENTIAL AND THE EXCLUSIVE PROPERTY OF HUBBELL POWER SYSTEMS. NO PUBLICATION, DISTRIBUTION OR COPIES MAY BE MADE WITHOUT THE WRITTEN CONSENT OF HUBBELL POWER SYSTEMS. HUBBELL POWER SYSTEMS UNPUBLISHED ALL RIGHTS RESERVED UNDER THE COPYRIGHT LAWS.



HUBBELL® POWER SYSTEMS

TITLE PDV-100 OPTIMA
15.3 KV MCOV

SIZE S	DWG NO. ALES50XX	CAT / PART / ASSY NO. 213715-5235	REV 55
DO NOT SCALE THIS DRAWING	DRN BY NDN	DATE 06/17/00	SHEET 1 OF 1