

25/28 kV ELBOW TAP PLUG

Conforms to all Requirements of IEEE Std. 386 - Latest Revision

Ratings

Maximum Continuous Voltage..... 16.2 kV Phase-to-Ground
Continuous Current.....600 A

Short-Time Current Ratings

0.17 Sec. Duration.....25,000 A rms Symmetrical
3.00 Sec. Duration.....10,000 A rms Symmetrical

Insulation Withstand Voltages

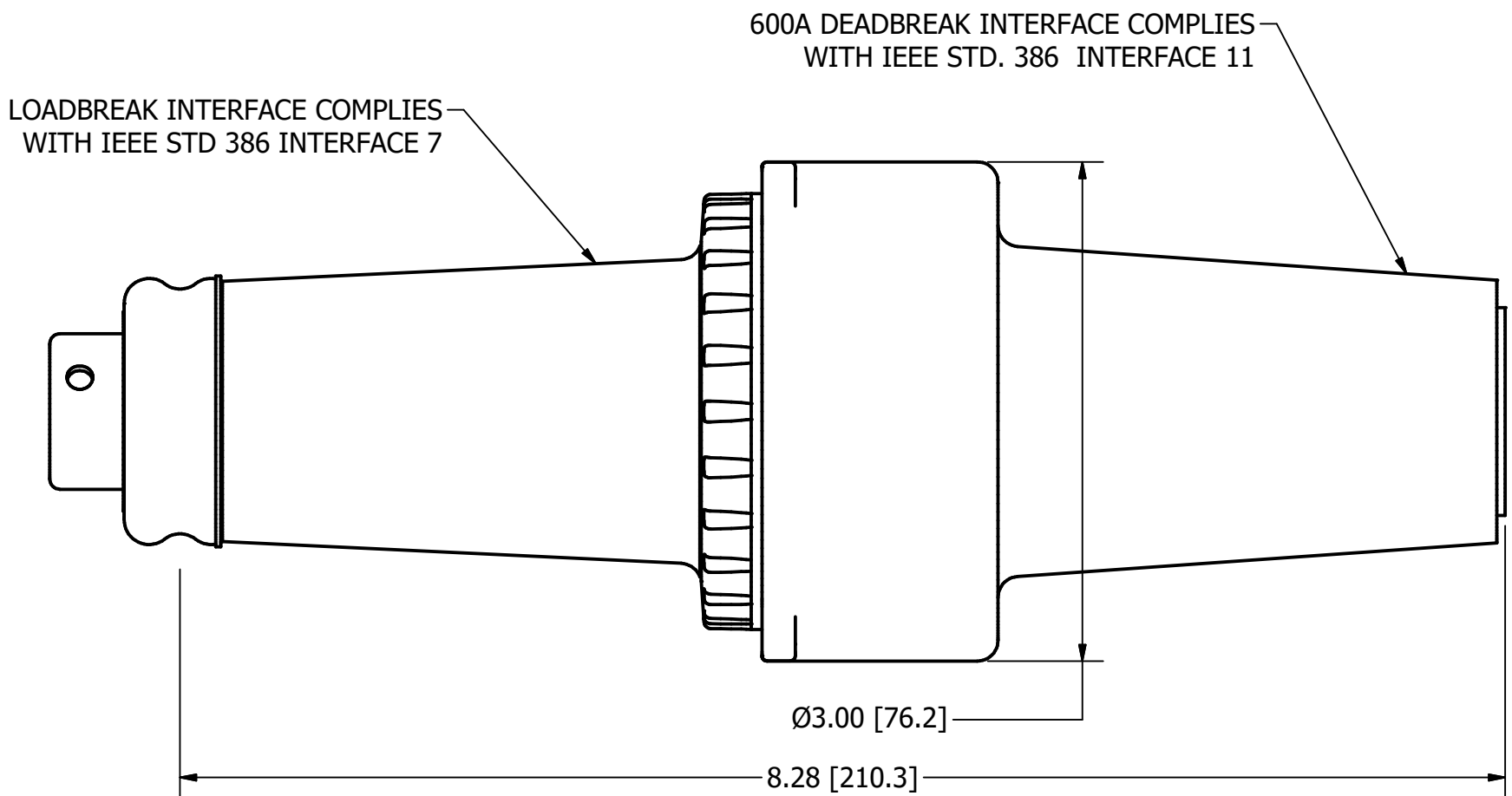
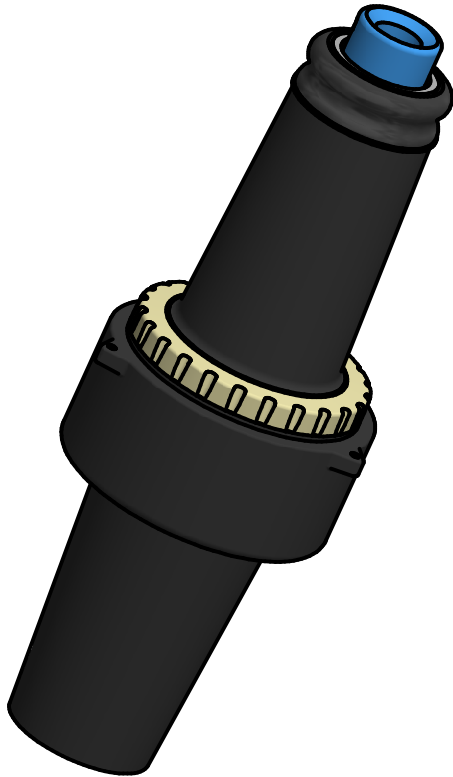
Basic Impulse Level..... 125 kV Crest (1.2 x 50 μSec. wave)
60 Hz (60 Sec.).....40 kV rms
Partial Discharge Extinction Voltage (3 pC).....19 kV rms

Overload Current

4 Hour Rating900 A


Production Tests

100% factory tested for Partial Discharge and either AC 60 Hz (60 Hz for 60 Sec.) or Impulse (BIL) (125 kV 1.2 x 50 μSec. wave) Test Point Verification Performed.



NOTES:

1. DIM: IN(MM)
2. HEX-BROACH FOR TORQUE IN INSTALLATION INCLUDED.

<p>CONTENTS ARE CONFIDENTIAL AND THE EXCLUSIVE PROPERTY OF HUBBELL POWER SYSTEMS. NO PUBLICATION, DISTRIBUTION OR COPIES MAY BE MADE WITHOUT THE WRITTEN CONSENT OF HUBBELL POWER SYSTEMS. HUBBELL POWER SYSTEMS UNPUBLISHED ALL RIGHTS RESERVED UNDER THE COPYRIGHT LAWS.</p>		 HUBBELL POWER SYSTEMS, Inc.			
		<p>TITLE ELBOW TAP PLUG 25 KV</p>			
REV DATE	09/09/2019	SIZE	DWG NO. SB 026388-00	CAT / PART / ASSY NO. 625ETP	REV 2
		DO NOT SCALE THIS DRAWING	DRN BY JVR	DATE 04/07/2004	SHEET 1 OF 1