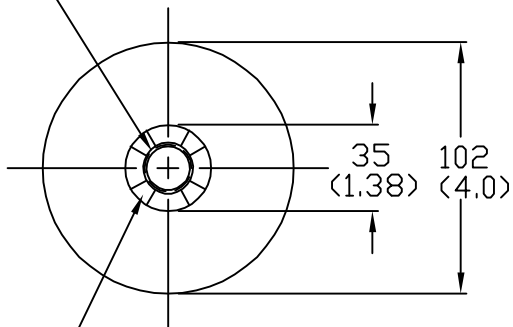
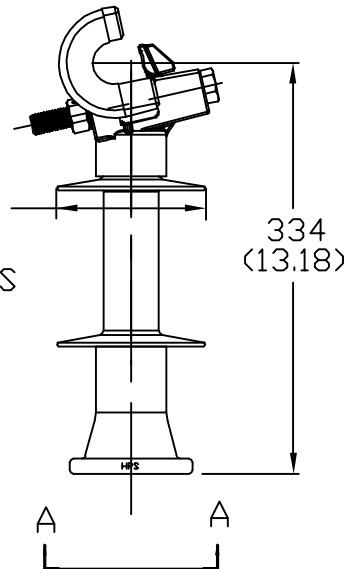


3/4-10 UFS-2B TAPPED HOLE
PER ANSI C29.7



CAST IN SERRATED LOCKING
PAD PER ANSI C29.7


VIEW A-A
2X SCALE



| | | |
|----------------------------------|-------|-------------------|
| DRY ARCING DISTANCE | _____ | 188 MM (7.4 IN) |
| LEAKAGE DISTANCE | _____ | 279 MM (11.0 IN) |
| 60 Hz DRY FLASHOVER | _____ | 90 kV |
| 60 Hz WET FLASHOVER | _____ | 70 kV |
| IMPULSE POS. CRITICAL; FLASHOVER | _____ | 150 kV |
| IMPULSE POS. WITHSTAND | _____ | 140 kV |
| SCL | _____ | 12.5 kN (2800 LB) |
| RCL | _____ | 5.5 kN (1235 LB) |
| NET WEIGHT | _____ | 3.1 KG (6.9 LB.) |

| | |
|-----------------------|-------------------------|
| CLAMP CONDUCTOR RANGE | 0.20"-1.34" |
| CLAMP MATERIAL | ALUMINIUM |
| INSULATOR MATERIAL | SILICONE RUBBER |
| BASE MATERIAL | DUCTILIE IRON |
| STANDARDS MET | ANSI C29.18, CSA C411.6 |

TOP CLAMP RECOMMENDED TORQUE: 70 ft-lbs. SEE INSTRUCTION SHEET 17-5142.

| | | | | |
|---|---|------------|---------------------------------|--------------|
| <p>CONFIDENTIAL: THIS DRAWING AND ITS CONTENTS ARE CONFIDENTIAL AND THE EXCLUSIVE PROPERTY OF HUBBELL POWER SYSTEMS. NO PUBLICATION, DISTRIBUTION OR COPIES MAY BE MADE WITHOUT THE WRITTEN CONSENT OF HUBBELL POWER SYSTEMS. HUBBELL POWER SYSTEMS UNPUBLISHED ALL RIGHTS RESERVED UNDER THE COPYRIGHT LAWS.</p> |  | | <h1>HUBBELL® POWER SYSTEMS</h1> | |
| | <p>TITLE</p> <h2>VERI LITE</h2> <h3>15 KV LINE POST</h3> | | | |
| REV DATE | SIZE | DWG NO. | CAT / PART / ASSY NO. | REV |
| 12/14/17 | S | -- | 80S015-0K09 | 4 |
| DO NOT SCALE THIS DRAWING | | DRN BY JVR | DATE 06/13/13 | SHEET 1 OF 1 |