



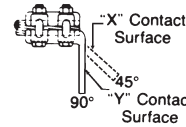
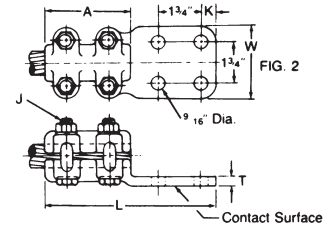
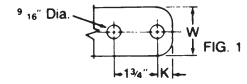
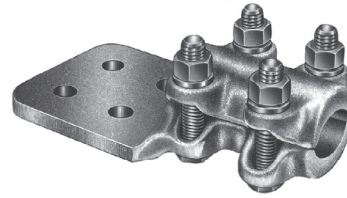
# TERMINALS BOLTED ALUMINUM STRAIGHT BOLT/CABLE TO FLAT

ALUMINUM  
ACF

Aluminum alloy terminal for connecting aluminum cable to aluminum or copper flat pad combinations. Side formed tongues are standard to allow clearance for flush mounting. Clamping bolts have hex-stops for one-wrench installation. Tongue holes have NEMA spacing. Contact sealant is recommended.

**Material:** Castings—356-T6 aluminum alloy  
Clamping Hardware—aluminum alloy

45° & 90° Angle connectors may be obtained by specifying desired angle. **Example:** ACF11B2Y90



## Product Data & Conductor Size

CATALOG NUMBER	FIG. NO.	CONDUCTOR RANGE			DIMENSIONS INCHES (MM)						APPROX. WT. EACH LBS. (KG)
		AAC	ACSR	CABLE DIA. INCHES (MM)	L	A	K	T	W	J	
*ACF6B	1	#4-250 MCM	#4-4/0 Str.	.232-.575 (5.89-14.6)	6 (152.4)	3 (76.2)	5/8 (15.88)	5/16 (7.94)	1-1/2 (38.1)	1/2 (12.7)	1.0 (.45)
*ACF6B2	1				6 (152.4)	3 (76.2)	5/8 (15.88)	5/16 (7.94)	2 (50.8)	1/2 (12.7)	1.0 (.45)
*ACF6C	2				6 (152.4)	3 (76.2)	5/8 (15.88)	5/16 (7.94)	3 (76.2)	1/2 (12.7)	1.1 (.50)
ACF7B	1	250-400 MCM	4/0-336 MCM	.563-.744 (14.3-18.9)	6 (152.4)	3 (76.2)	5/8 (15.88)	5/16 (7.94)	1-1/2 (38.1)	1/2 (12.7)	1.0 (.45)
ACF7B2	1				6 (152.4)	3 (76.2)	5/8 (15.88)	5/16 (7.94)	2 (50.8)	1/2 (12.7)	1.0 (.45)
ACF7C	2				6 (152.4)	3 (76.2)	5/8 (15.88)	5/16 (7.94)	3 (76.2)	1/2 (12.7)	1.1 (.50)
ACF9B2	1	350-600 MCM	336-477 MCM	.681-.893 (17.3-22.68)	6-1/4 (158.75)	3-1/4 (82.55)	5/8 (15.88)	3/8 (9.52)	2 (50.8)	1/2 (12.7)	1.2 (.54)
ACF9C	2				6-1/4 (158.75)	3-1/4 (82.55)	5/8 (15.88)	3/8 (9.52)	3 (76.2)	1/2 (12.7)	1.4 (.64)
ACF11B2	1	600-900 MCM	556.5-795 MCM	.870-1.108 (22.1-28.14)	6-1/2 (165.1)	3-1/2 (88.9)	5/8 (15.88)	3/8 (9.52)	2 (50.8)	5/8 (15.88)	1.4 (.64)
ACF11C	2				6-1/2 (165.1)	3-1/2 (88.9)	5/8 (15.88)	3/8 (9.52)	3 (76.2)	1/2 (12.7)	1.5 (.68)
ACF13B2	1	900-1250 MCM	715-1113 MCM	1.081-1.293 (27.46-32.84)	6-7/8 (174.6)	3-3/4 (95.25)	5/8 (15.88)	3/8 (9.52)	2 (50.8)	1/2 (12.7)	1.6 (.72)
ACF13C	2				7-1/8 (181.0)	3-3/4 (95.25)	5/8 (15.88)	3/8 (9.52)	3 (76.2)	1/2 (12.7)	1.7 (.77)
ACF13D	2				7-3/4 (196.85)	3-3/4 (95.25)	1-1/8 (28.58)	3/8 (9.52)	4 (101.6)	1/2 (12.7)	2.1 (.95)
ACF15C	2	1250-1600 MCM	1113-1272 MCM	1.289-1.459 (32.74-37.06)	7-1/4 (184.15)	4-1/4 (107.95)	5/8 (15.88)	5/8 (15.88)	3 (76.2)	5/8 (15.88)	2.8 (1.27)
ACF15D	2				8-1/4 (209.55)	4-1/4 (107.95)	1-1/8 (28.58)	1/2 (12.7)	4 (101.6)	5/8 (15.88)	3.1 (1.4)
ACF16C	2	1500-2000 MCM	1272-1780 MCM	1.382-1.632 (35.10-41.45)	7-1/2 (190.5)	4-1/2 (114.3)	5/8 (15.88)	7/16 (11.11)	3 (76.2)	5/8 (15.88)	3.0 (1.36)
ACF16D	2				8-1/2 (215.9)	4-1/2 (114.3)	1-1/8 (28.58)	7/16 (11.11)	4 (101.6)	5/8 (15.88)	3.3 (1.50)
†ACF18D	2	2000-2500 MCM	2034-2312 MCM	1.632-1.824 (41.45-46.33)	10-3/4 (273.05)	6-3/4 (171.45)	1-1/8 (28.58)	5/8 (15.88)	4 (101.6)	5/8 (15.88)	5.1 (2.31)

\* Furnished with reversible cable caps.

† Furnished with six clamping bolts.