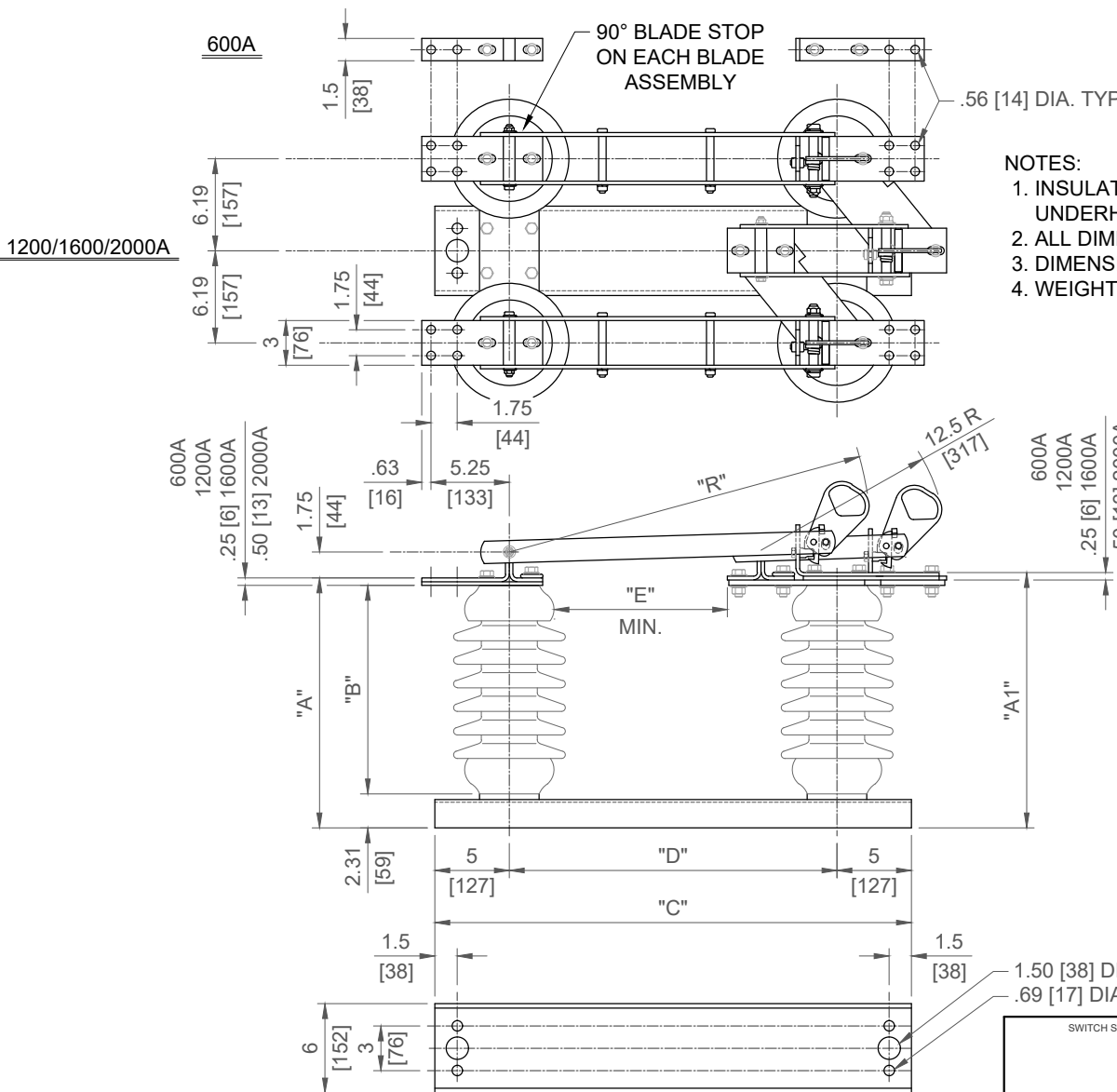


GROUP NO.	RATINGS					POST INSUL NEMA TR#	DIMENSIONS IN INCHES MILLIMETERS SHOWN IN []							WEIGHT/POLE (INCL. INSUL.)	
	kV NOM.	kV MAX.	kV BIL	AMPS	KA MOM.		"A"	"A1"	"B"	"C"	"D"	"E"	"R"	LBS	kg
G01 G02 G03	7.2	8.3	95	600 1200 2000	40 61 100	202	10.06 [255]	10.44 [265]	7.50 [191]	26 [660]	16 [406]	7 [178]	18.38 [467]	127 138 154	[57.7] [62.7] [69.9]
G04 G05 G06	14.4	15.5	110	600 1200 2000	40 61 100	205	12.56 [319]	12.94 [329]	10 [254]	30 [762]	20 [508]	10 [254]	22.38 [568]	139 151 163	[63.1] [68.6] [74.0]
G07 G08 G09	23	27	150	600 1200 2000	40 61 100	208	16.56 [421]	16.94 [430]	14 [356]	32 [813]	22 [559]	12 [305]	24.38 [619]	189 201 220	[85.8] [91.3] [99.9]
G10 G11 G12	34.5	38	200	600 1200 2000	40 61 100	210	20.56 [522]	20.94 [532]	18 [457]	40 [1016]	30 [762]	18 [457]	32.38 [822]	240 253 277	[109.0] [114.9] [125.8]
G13	7.2	8.3	95	1600	70	202	10.06 [529]	10.44 [265]	7.50 [191]	26 [660]	16 [406]	7 [178]	18.38 [467]	148	[67.3]
G14	14.4	15.5	110	1600	70	205	12.56 [319]	12.94 [329]	10 [254]	30 [762]	20 [508]	10 [254]	22.38 [568]	159	[72.3]
G15	23	27	150	1600	70	208	16.56 [421]	16.94 [430]	14 [356]	32 [813]	22 [559]	12 [305]	24.38 [619]	213	[96.8]
G16	34.5	38	200	1600	70	210	20.56 [522]	20.94 [532]	18 [457]	40 [1016]	30 [762]	18 [457]	32.38 [822]	267	[121.4]



- NOTES:
1. INSULATORS INVERTED FOR UNDERHUNG MOUNTING.
 2. ALL DIMENSIONS ARE IN INCHES.
 3. DIMENSIONS IN [] ARE IN mm.
 4. WEIGHTS IN [] ARE IN kg.

Cleaveland/Price Inc. 1400 Rt. 993 Trafford, PA 15085-9550		SWITCH STYLE REFERENCE NUMBER	REV
		GH	H
RBI COPPER HOOKSTICK OPERATED BYPASS SWITCH 7.2-34.5kV 600-2000A; 3" BC INSULATORS & 6" CHANNEL BASE		DATE	VERSION
		04/01/1992	1
DRAWING NO. C13A002		CHECKED	
		APPROVED	