



# Stingray™ 135

HIGH-VOLTAGE FLEXIBLE CCS STINGER WIRE  
FOR POLE-TOP TRANSFORMERS



135 AMP, COVERED



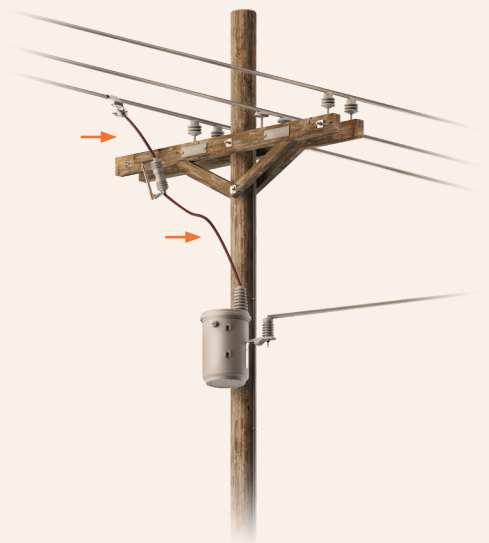
## Flexible, Durable Copper-Clad Steel

Copperweld® Stingray™ Wire is an easy-to-install, jacketed, copper-clad steel high-voltage cable for use between primary phase conductors and equipment bushings. Stingray™ is designed for animal protection applications (bird wire, squirrel wire, etc.) for continuous current power conductors on 15 kV pole-top distribution applications.



## Specifications

- > **Ampacity** 135 Amps
- > **Break Load** 1,115 lbs
- > **Material** TPE with UV protection
- > **Thickness** 110 mil
- > **OD** 0.412 inches
- > **Color** Black
- > **Brittleness Temp.** -60° C
- > **Service Temp.** 130° C
- > **Dielectric Constant** 2.3
- > **Packaging** Wood reels and truck reels



## Features and Benefits

- > **Stronger than copper** – more resistant to wind fatigue and weather damage with 1.5x breakload capacity
- > **Reduce or eliminate power outages** – caused by wildlife contact with energized transformer riser wire
- > **Easier to install** – faster to strip, cut and connect than traditional polyethylene
- > **More durable** – UV-resistant insulation with a strong, durable steel core (CCS) conductor
- > **15 kV applications** – riser wire for cutouts and transformers and covered ground wire in distribution circuits
- > **Convenient packaging** – wood reels and truck reels

	Ampacity*	Break Load	Overall Diameter	Insulation Thickness	Linear Weight	Packaging
	Amps	lbs	inches	inches	lb/ft	Sizes
<b>Stingray™ 135</b> #6 Copper Equivalent   7 Strands	<b>135</b>	1115	0.412	0.110	0.126	200' Spool 1000' Reel 5000' Reel
<b>Stingray™ 195</b> #4 Copper Equivalent   7 Strands	<b>195</b>	2013	0.558	0.150	0.232	Master Reel Small Reel Truck Reel
<b>Stingray™ 245</b> #2 Copper Equivalent   7 Strands	<b>245</b>	2826	0.606	0.150	0.300	Master Reel Small Reel Truck Reel

\* 25°C ambient; 2 ft/sec. crosswind



Copperweld bimetallics have been processed in the USA for over 100 years using the world's highest-quality steel and aluminum and 99.999% oxygen-free copper to provide superior protection and unmatched durability.



Copperweld® Brand Wire offers the only Copperwelded™ conductor made in the USA. Genuine Copperweld® brand products are distributed by Copperweld Bimetallics.

[powergrid@copperweld.com](mailto:powergrid@copperweld.com) | [615-377-4200](tel:615-377-4200) | [copperweld.com](http://copperweld.com)

