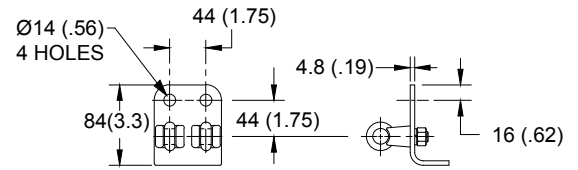


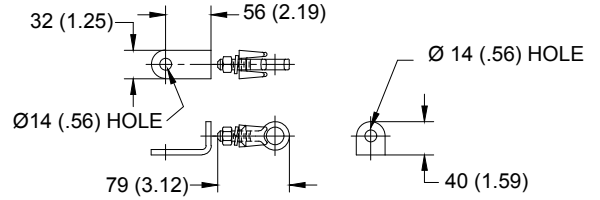


LINE TERMINAL DETAIL



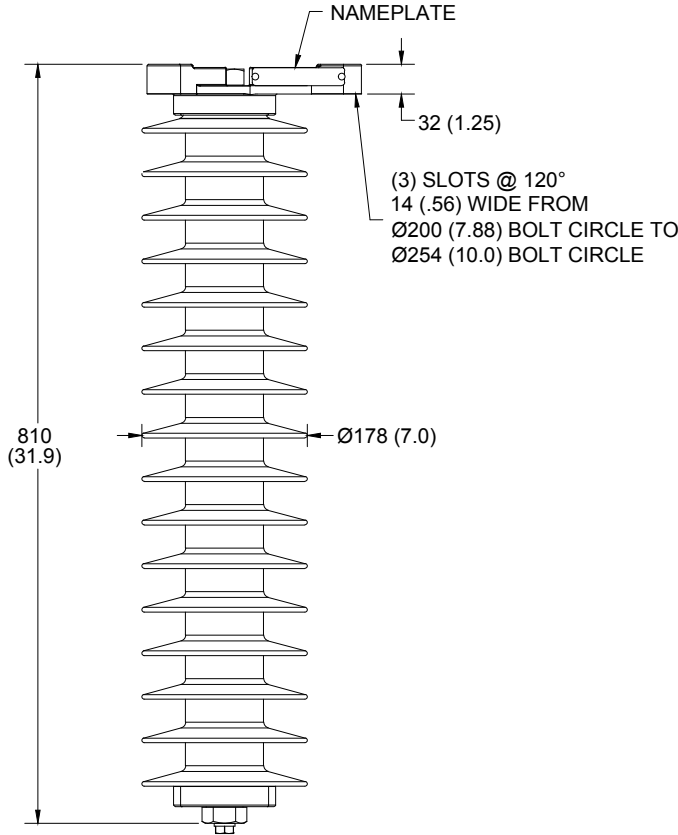
HDG 4-HOLE TERMINAL PAD, PART No. 274914-4002  
 TWO HDG TERMINALS, PART No. 271414-3001 SUITABLE  
 FOR COPPER OR ALUMINUM CONDUCTOR SIZE  
 Ø 7 (.25) - Ø 21 (.81)  
 25 - 240 sq mm  
 AWG#4 - 500 MCM

GROUND TERMINAL DETAIL



HDG TERMINAL BRACKET, PART No. 89606-4001  
 ONE HDG TERMINAL, PART No. 271414-3001 SUITABLE  
 FOR COPPER OR ALUMINUM CONDUCTOR SIZE  
 Ø 7 (.25) - Ø 21 (.81)  
 25 - 240 sq mm  
 AWG#4 - 500 MCM

Ø = DIAMETER  
 HDG = HOT DIP GALVANIZED



CHARACTERISTICS

RATED VOLTAGE (Ur)	60 kVrms
MCOV (Uc)	48 kVrms
MASS	18.6 kg (41 lb)
COG ABOVE BASE	406 (16)
CREEPAGE DISTANCE	2093 (82.4)
STRIKE DISTANCE	734 (28.9)
LIGHTNING IMP W/S	421 kVpk
SWITCHING IMP WET W/S	353 kVpk
POWER FREQ WET W/S	194 kVrms
TOV 1s NO PRIOR DUTY	69 kVrms
TOV 10s NO PRIOR DUTY	66 kVrms
TOV 1s W/PRIOR DUTY	65.8 kVrms
TOV 10s W/PRIOR DUTY	62.1 kVrms

CANTILEVER FORCE

MAX CONTINUOUS - MDCL	1265 N (284 lbf)
MAX SHORT TERM LOAD	2531 N (569 lbf)
SLL BENDING FORCE	1012 N (227 lbf)
SSL BENDING FORCE	2025 N (455 lbf)

RECOMMENDED CLEARANCE (METAL - METAL)

PHASE TO GROUND	259.5 (10.2)
PHASE TO PHASE	307 (12.1)

- NOTES:  
 1. DIMENSIONS IN millimeters(inches) SUBJECT TO ±3% TOLERANCE  
 2. CLEARANCE AND INSULATION W/S VOLTAGE APPLY AT SEA LEVEL  
 3. ARRESTER SUITABLE FOR OPERATION AT ALTITUDES UP TO 4380 m (14370 ft)  
 4. PACKAGED IN A CORRUGATED BOX

MAXIMUM RESIDUAL VOLTAGE (kV)

FOW	SWITCHING SURGE		8/20 LIGHTNING IMPULSE					
	500 A	1 kA	1.5 kA	3.0 kA	5 kA	10 kA	20 kA	40 kA
161	116	120	124	131	138	147	161	180

TITLE

EVP ARRESTER 48 kV MCOV

SIZE CATALOG NUMBER REV  
 S EVP204810-3001 0

This drawing and its contents are confidential and the exclusive property of Hubbell Power Systems, Inc. No publication, distribution or copies may be made without the written consent of Hubbell Power Systems, Inc. Hubbell Power Systems unpublished all rights reserved under the copyright laws.

IEEE C62.11  
 STATION CLASS  
 IEC 60099-4  
 10KA SM CLASS  
 SURGE ARRESTER  
 REV DATE 12/10/2020

DO NOT SCALE THIS DRAWING DRN BY NON DATE CREATED 05/03/11 SHEET 1 OF 1