

FIG. NO.	CATALOG NUMBER	CU LARGE END SOLID	CU LARGE END STRAND	CU SMALL END SOLID	CU SMALL END STRAND	ACSR LARGE END	ACSR SMALL END	DIM A	DIM B	APPROX. WT. EACH LB. [KG]	STANDARD PACK
1	GL150	4	-	6	-	-	-	4 [100]	.560 [14]	0.137 [0.06]	100
1	GL151	3	4	6	-	-	-	4 [100]	.560 [14]	0.137 [0.06]	100
1	GL152	3	4	4	-	-	-	4 [100]	.560 [14]	0.127 [0.05]	100
1	GL153	2	3	6	-	-	-	5 [130]	.750 [19]	0.274 [0.12]	100
1	GL154	2	3	4	-	-	-	5 [130]	.750 [19]	0.307 [0.13]	100
1	GL155	1	2	6	-	-	-	5 [130]	.750 [19]	0.284 [0.12]	100
1	GL156	1	2	4	-	-	-	5 [130]	.750 [19]	0.294 [0.13]	100
1	GL157	1	2	3	4	-	-	5 [130]	.750 [19]	0.284 [0.12]	100
1	GL158	1	2	2	3	-	-	5 [130]	.750 [19]	0.265 [0.12]	100
1	GL159	1/0	1	3	4	-	-	5 [130]	.750 [19]	0.270 [.123]	100
1	GL160	1/0	1	2	3	-	-	5 [130]	.750 [19]	0.265 [0.12]	100
1	GL161	1/0	1	1	2	-	-	5 [130]	0.750 [19]	0.265 [0.12]	100
1	GL162	2/0	1/0	3	4	-	-	6 [150]	0.940 [24]	0.484 [0.21]	100
1	GL163	2/0	1/0	2	3	-	-	6 [150]	0.940 [24]	0.559 [0.25]	100
1	GL164	2/0	1/0	1	2	-	-	6 [150]	0.940 [24]	0.559 [0.25]	100
1	GL165	2/0	1/0	4	-	-	-	6 [150]	0.940 [24]	0.559 [0.25]	100
1	GL166	2/0	1/0	1/0	1	-	-	6 [150]	0.940 [24]	0.608 [0.27]	100
1	GL168	3/0	2/0	2	3	-	-	6 [150]	0.940 [24]	0.559 [0.25]	100
1	GL169	3/0	2/0	1	2	-	-	6 [150]	0.940 [24]	0.500 [0.23]	100
1	GL170	3/0	2/0	1/0	1	-	-	6 [150]	0.940 [24]	0.549 [0.24]	100
1	GL171	3/0	2/0	2/0	1/0	-	-	6 [150]	0.940 [24]	0.490 [0.22]	100
1	GL172	4/0	3/0	3/0	2/0	-	-	7.400 [190]	1.300 [33]	1.058 [0.48]	50
1	GL173	-	4/0	2/0	1/0	-	-	7.400 [190]	1.300 [33]	1.117 [0.50]	50
1	GL174	-	4/0	3/0	2/0	-	-	7.400 [190]	1.300 [33]	1.058 [0.48]	50
1	GL175	-	4/0	4/0	3/0	-	-	7.400 [190]	1.300 [33]	1.065 [0.48]	50
1	GL176	-	250	-	4/0	-	-	7.400 [190]	1.300 [33]	1.058 [0.48]	50
2	GL406A4042A	-	-	-	-	1/0	4 - 2	12.100 [307]	1.200 [30]	0.402 [0.18]	25
2	GL412411	-	-	-	-	397.5	336.4	21 [530]	2.000 [51]	2.156 [0.97]	25

COPPER REDUCING SPLICES		
ITEM	DESCRIPTION	MATERIAL
1	TUBE	COPPER
2	CONE	BRONZE
3	SPRING	STAINLESS STEEL OR GALVANIZED STEEL
ACSR REDUCING SPLICE		
ITEM	DESCRIPTION	MATERIAL
1	TUBE	ALUMINUM
2	NOSE GUIDE	PLASTIC
3	JAW	ALUMINUM
4	SPRING	GALVANIZED STEEL
5	CENTERSTOP	PLASTIC
6	PILOT CUP	STEEL

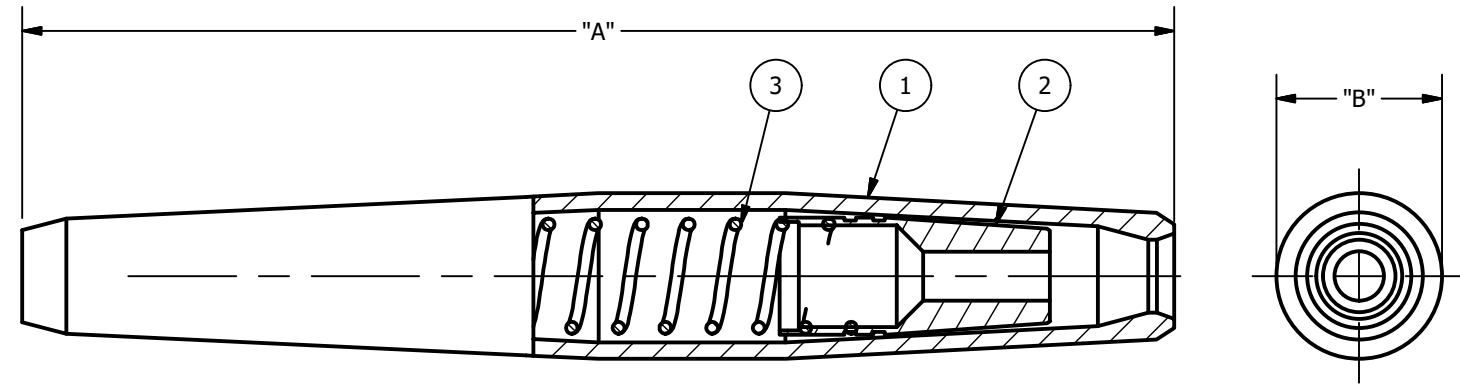


FIG-1 COPPER

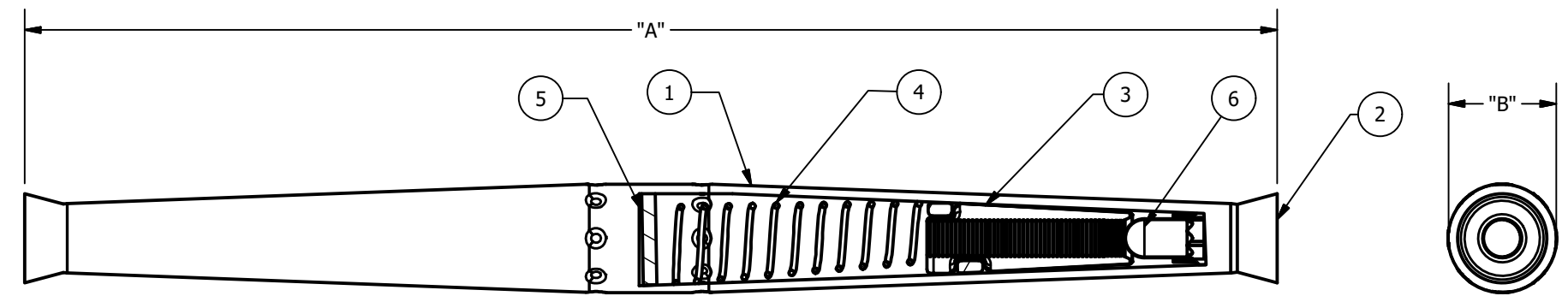
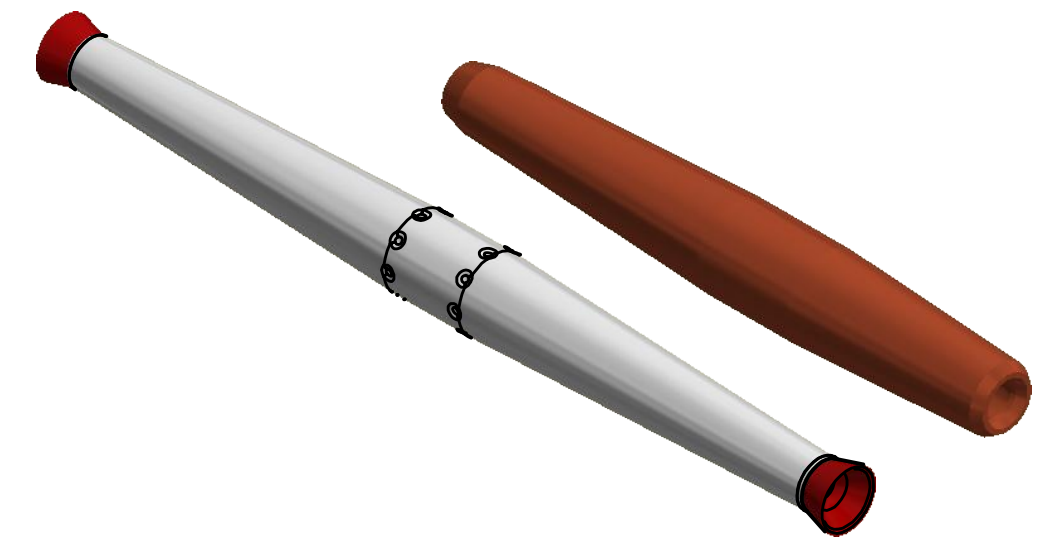


FIG-2 ACSR



NOTES:
 1. ALL DIMENSIONS FOR REFERENCE ONLY. DISTANCE IN. [MM], FORCE LBS. [kN], TORQUE IN. LBS. [N.m], & WEIGHT LBS. [KG].
 2. RATINGS:
 A. CONSULT FACTORY FOR RATING.

75536	08/29/18	JT	SD
EC #	DATE	CHG BY	RESP ENG
DESC OF DWG: INITIAL RELEASE			
REASON (S) FOR CHANGE: DISPOSITION OF MAT'L:			

HPS
 CONFIDENTIAL: THIS DRAWING AND ITS CONTENTS ARE CONFIDENTIAL AND THE EXCLUSIVE PROPERTY OF HUBBELL POWER SYSTEMS. NO PUBLICATION, DISTRIBUTION OR COPIES MAY BE MADE WITHOUT THE WRITTEN CONSENT OF HUBBELL POWER SYSTEMS. HUBBELL POWER SYSTEMS UNPUBLISHED ALL RIGHTS RESERVED UNDER THE COPYRIGHT LAWS

HUBBELL POWER SYSTEMS, INC.				HUBBELL POWER SYSTEMS			
TITLE OVERHEAD AUTOMATIC REDUCING SPLICE							
SIZE C	DWG NO. CC-25240	CAT / PART / ASSY NO. SEE TABLE			REV 00		
DO NOT SCALE THIS DRAWING		DRN BY JT	DATE 12/27/2017	SHEET 1	OF 1		