



## STUD CONNECTORS BOLTED BRONZE STUD TO FLAT BAR

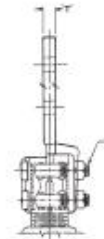
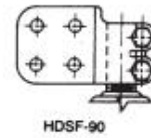
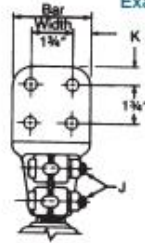
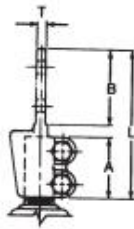
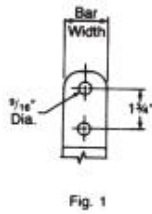
BRONZE
HDSF

Bronze alloy stud connector for connecting copper flat pad to copper stud. Tongue holes have NEMA hole spacing with contact surface on both sides.

**Material:** Casting-Bronze Alloy  
**Hardware:** Silicon Bronze or Stainless Steel

**Note:** To specify 90 degree connector, insert "90" into catalog number.

**Example:** HDSF1413389012



### Product Data & Conductor Size

CATALOG NUMBER	STUD DIA./THD.	FIG. NO.	FLAT BAR WIDTH	DIMENSIONS INCHES (MM)						APPROX. WT. EACH LBS. (KG)
				L	A	B	T	J	K	
HDSF141D1212	1-1/2 - 12	3	4	7-3/8 (187.32)	2 (50.8)	4-1/8 (104.78)	1/2 (12.7)	1/2 (12.7)	1-1/8 (28.58)	5.2 (2.36)