

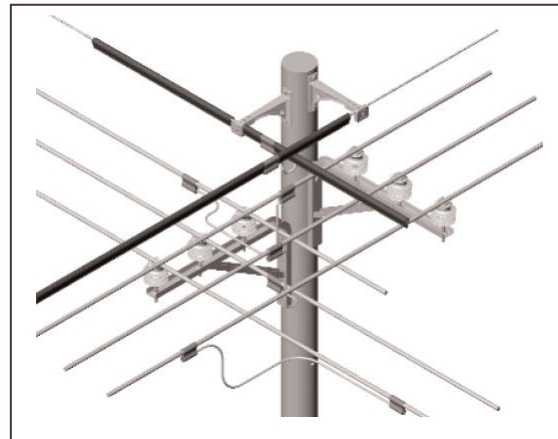
LINEDUC

LINEDUC is a protective guard which can be easily clipped onto bare or covered conductors, messengers, service drops and communication cables. It protects conductors from abrasion and contact by tree limbs and animals. LINEDUC is extruded using proprietary, track resistant, high density polyethylene.

LINEDUC is available in two sizes; standard or jumbo. The standard size is available in black or gray. Jumbo is available in black only. Required lengths can be cut at the job site from standard 8 foot sections. After LINEDUC is clipped over the conductor, it is anchored at the ends with tie wire to prevent longitudinal movement along the conductor.

- Eliminates conductor abrasion and contact grounding
- Minimizes service interruptions and repair costs
- Reduces tree trimming
- Durable, economical and easy to install
- Made in USA

CAUTION: LINEDUC is not a protective safety covering for energized work and not intended for personnel protection



PRODUCT DATA

Characteristic	LINEDUC	JUMBO LINEDUC
Color		
DIMENSIONS		
A (in)	2	3
B (in)	1	1-1/2
C (in)	2-1/2	3-1/2
Length (ft)	8	8
OTHER		
Part Weight (lbs)	2.8	4.6
Max Continuous Conductor Temp (°C)	120	120

