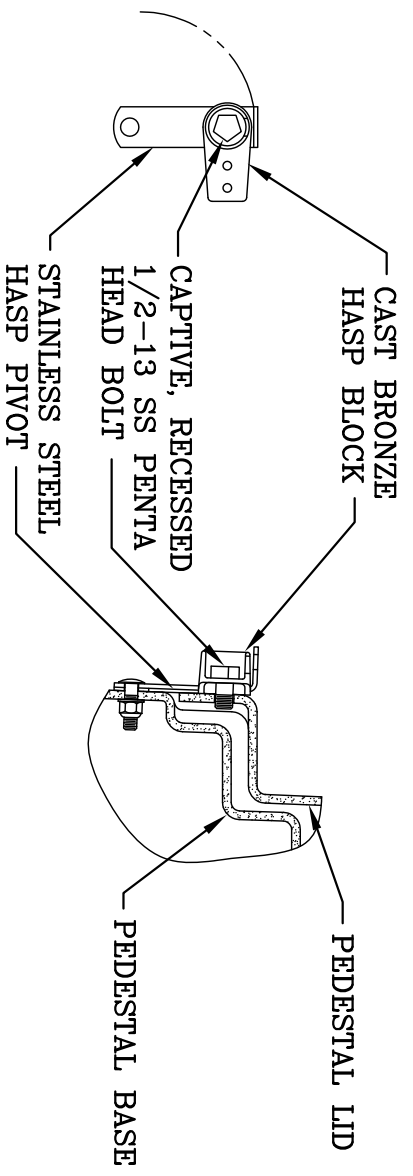
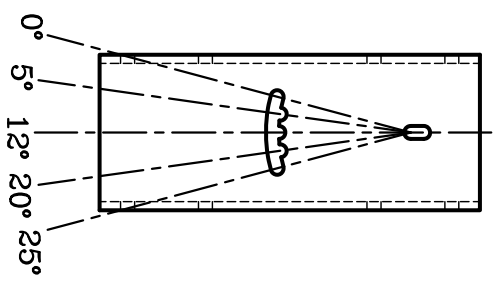


ITEM#	DESCRIPTION	QTY.
1	58X25X42 PRIMARY PEDESTAL	1
2	KIT, HASP ASS'Y DF3 PEDESTAL	1
3	58" JMB ASS'Y - INLINE STANDS	1
4	KIT, LIFTING EYE ASSEMBLY	4
5	KIT, COVER WIND LOCK	2
6	GROUNDING LUG	1

**ADJUSTABLE JUNCTION PLATE  
WORKING ANGLES**



**DF3 HASP DETAIL**

- NOTES:**
1. MOUNTING BAR WILL WITHSTAND A MINIMUM 400 LB. [181kg] LOADING TO INSTALL OR REMOVE ELBOWS.
  2. JUNCTION MOUNTING MATERIAL IS ALUMINUM AND ALL MOUNTING HARDWARE IS STAINLESS STEEL.
  3. MATERIAL & WORKMANSHIP PER WESTERN POWER PRODUCTS SPECIFICATION DATED JANUARY, 1990.
  4. MATERIAL THICKNESS IS 1/4 [6].
  5. A SMOOTH 12 [305] X 12 [305] SURFACE ON THE INSIDE OF THE COVER WILL BE PROVIDED FOR THE PLACEMENT LABELS.

DIMENSIONS ARE IN INCHES OR MILLIMETERS IN BRACKETS UNLESS OTHERWISE NOTED.

BY	DATE	WEIGHT	LOC
RG	1/20/12	176# 80kg	LC
DRN	2/13/12	SCALE	S
CHK	2/13/12	NTS	REV
ENG	2/13/12	SIZE	B
APR	2/13/12	PROJECT NUMBER	6/12
APR		105336	

**HUBBELL**  
780 WEST GRANADA BLVD,  
SUITE 300  
ORMOND BEACH, FL 32174  
386-615-9510  
www.hubbellpowersystems.com

DRAWING DESCRIPTION  
**HUBBELL® PRIMARY PEDESTAL**  
58X25X42 MUNSELL GREEN  
INLINE STANDS

DRAWING NUMBER  
P3582542MDL

SHEET 1 OF 1