

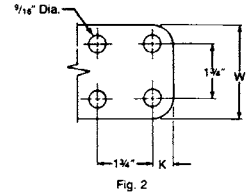
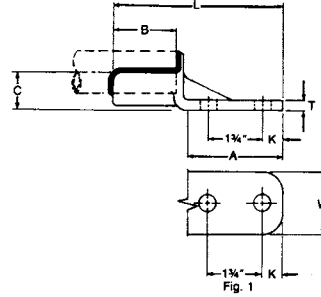
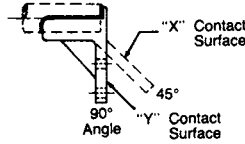
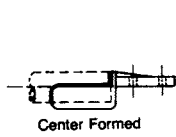
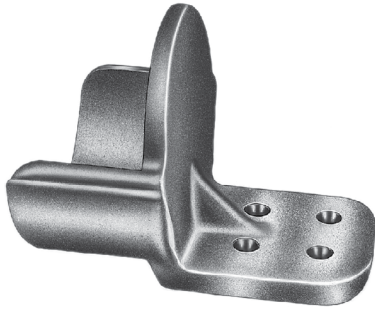


ALUMINUM
WSTF

TERMINALS WELDMENT ALUMINUM TERMINAL TUBE TO FLAT

Aluminum alloy weldment terminal for connecting aluminum tubing to aluminum or copper flat pad. Tongue holes have NEMA spacing. Contact sealant is recommended for contact pad after welding.

Material: Casting—356-F aluminum alloy



Center formed pad may be obtained by adding "CF" to catalog number.

Example: WSTF10B2CF

45° & 90° angle connectors may be obtained by specifying desired angle.

Example: WSTF06B2Y90

Product Data & Conductor Size

CATALOG NUMBER	FIG. NO.	ALUMINUM CONDUCTOR SIZE IPS/EHIPS	DIMENSIONS INCHES (MM)							APPROX. WT. EACH LBS. (KG)
			L	A	B	C	K	T	W	
WSTF06B2	1	3/4	6 (152.4)	3-1/4 (82.55)	2-1/2 (63.5)	1-1/2 (38.1)	5/8 (15.88)	3/8 (9.52)	2 (50.8)	.53 (.24)
WSTF10B2	1	1	6-1/4 (158.75)	3-1/4 (82.55)	2-3/4 (69.85)	1-3/16 (30.16)	5/8 (15.88)	3/8 (9.52)	2 (50.8)	.66 (.30)
WSTF10C	2	1	6-1/8 (155.58)	3-1/4 (82.55)	2-3/4 (69.85)	1-3/16 (30.16)	5/8 (15.88)	3/8 (9.52)	3 (76.2)	.70 (.32)
WSTF12B2	1	1-1/4	6-5/8 (168.28)	3-1/4 (82.55)	3 (76.2)	1-3/8 (34.92)	5/8 (15.88)	3/8 (9.52)	2 (50.8)	.76 (.34)
WSTF12C	2	1-1/4	6-3/8 (161.92)	3-1/4 (82.55)	3 (76.2)	1-3/8 (34.92)	5/8 (15.88)	3/8 (9.52)	3 (76.2)	.87 (.40)
WSTF14B2	1	1-1/2	6-3/4 (171.45)	3-1/4 (82.55)	3-1/4 (82.55)	1-1/2 (38.1)	5/8 (15.88)	7/16 (11.11)	2 (50.8)	.90 (.41)
WSTF14C	2	1-1/2	6-3/4 (171.45)	3-1/4 (82.55)	3-1/4 (82.55)	1-1/2 (38.1)	5/8 (15.88)	3/8 (9.52)	3 (76.2)	.85 (.39)
WSTF20B2	1	2	7-1/8 (180.98)	3-1/4 (82.55)	3-1/2 (88.9)	1-3/4 (44.45)	5/8 (15.88)	7/16 (11.11)	2 (50.8)	1.1 (.48)
WSTF20C	2	2	5-1/2 (139.7)	3-1/4 (82.55)	1-3/4 (44.45)	1-3/4 (44.45)	5/8 (15.88)	3/8 (9.52)	3 (76.2)	1.1 (.48)
WSTF20D	2	2	7-7/8 (200.02)	4-1/4 (107.95)	3-1/2 (88.9)	1-3/4 (44.45)	1-1/8 (28.58)	1/2 (12.7)	4 (101.6)	2.0 (.89)
WSTF24B2	1	2-1/2	7-1/2 (190.5)	3-1/4 (82.55)	3-3/4 (95.25)	2 (50.8)	5/8 (15.88)	9/16 (14.29)	2 (50.8)	1.4 (.64)
WSTF24C	2	2-1/2	7-1/2 (190.5)	3-1/4 (82.55)	3-3/4 (95.25)	2 (50.8)	5/8 (15.88)	9/16 (14.29)	3 (76.2)	1.7 (.75)
WSTF24D	2	2-1/2	8-1/4 (209.55)	4-1/4 (107.95)	3-3/4 (95.25)	2 (50.8)	1-1/8 (28.58)	1/2 (12.7)	4 (101.6)	2.0 (.89)
WSTF30B2	1	3	7-7/8 (200.02)	3-1/4 (82.55)	4 (101.6)	2-3/8 (60.32)	5/8 (15.88)	11/16 (17.46)	2 (50.8)	1.9 (.86)
WSTF30C	2	3	6-1/4 (158.75)	3-1/4 (82.55)	2-1/2 (63.5)	2-3/8 (60.32)	5/8 (15.88)	5/8 (15.88)	3 (76.2)	2.0 (.89)
WSTF30D	2	3	9 (228.5)	4-1/4 (107.95)	4 (101.6)	2-3/8 (60.32)	1-1/8 (28.58)	5/8 (15.88)	4 (101.6)	2.9 (1.3)
WSTF34C	2	3-1/2	7-3/4 (196.85)	3-1/4 (82.55)	4-1/4 (107.95)	2-5/8 (66.68)	5/8 (15.88)	5/8 (15.88)	3 (76.2)	2.5 (1.1)
WSTF34D	2	3-1/2	8-3/4 (222.25)	4-1/4 (107.95)	4-1/4 (107.95)	2-5/8 (66.68)	1-1/8 (28.58)	5/8 (15.88)	4 (101.6)	3.0 (1.4)
WSTF40D	2	4	7-3/4 (196.85)	4-1/4 (107.95)	3 (76.2)	2-7/8 (73.02)	1-1/8 (28.58)	3/4 (19.05)	4 (101.6)	3.1 (1.4)
WSTF50D	2	5	7-3/4 (196.85)	4-1/4 (107.95)	3 (76.2)	3-5/8 (92.08)	1-1/8 (28.58)	3/4 (19.05)	4 (101.6)	4.1 (1.9)
WSTF60D	2	6	9-1/4 (234.95)	4-1/4 (107.95)	4-1/4 (107.95)	4 (101.6)	1-1/8 (28.58)	1 (25.4)	4 (101.6)	6.1 (2.8)

SA
26